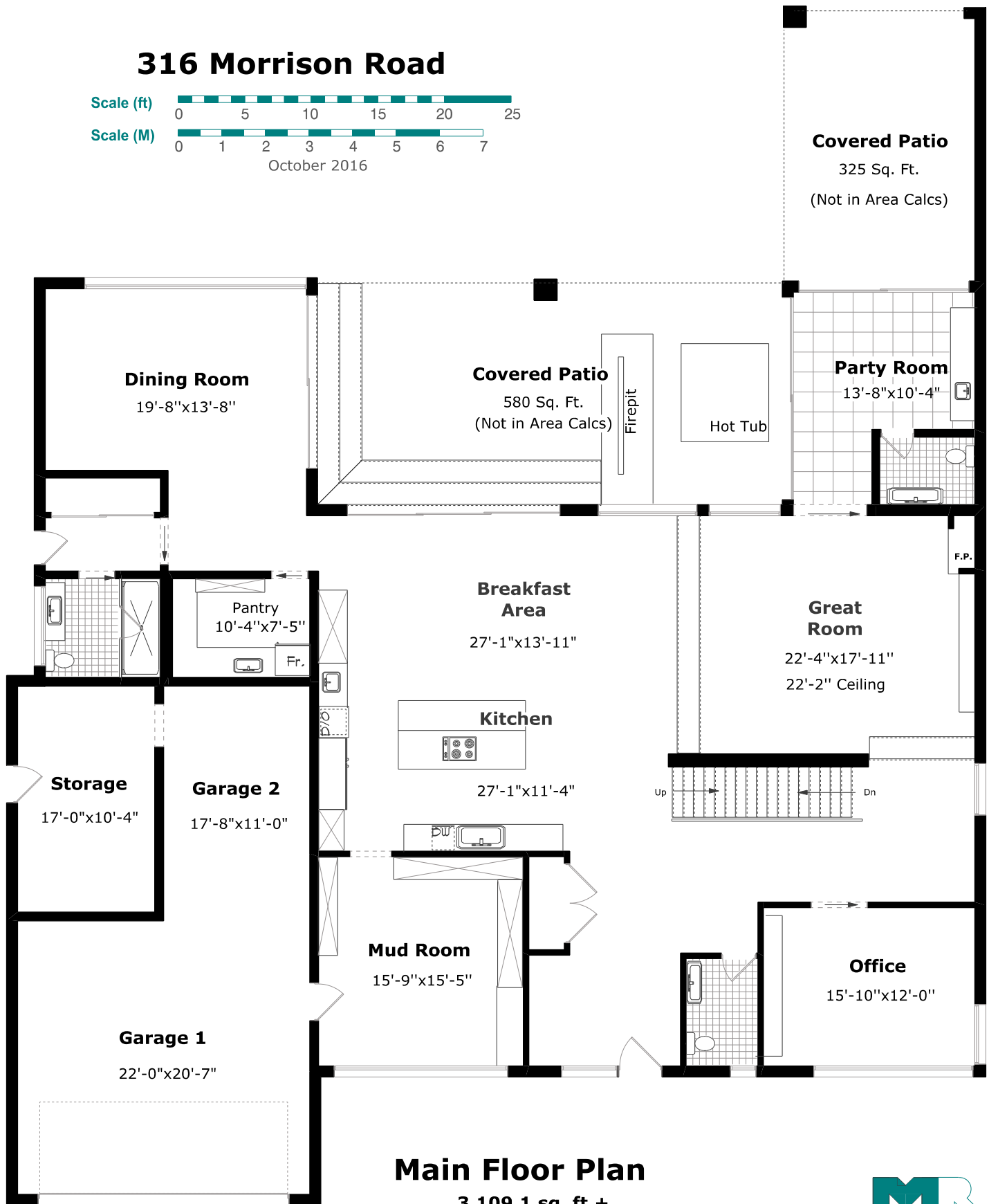


316 Morrison Road



Main Floor Plan

3,109.1 sq. ft.+
910.6 sq. ft. (Garage)
10'-0" Ceiling



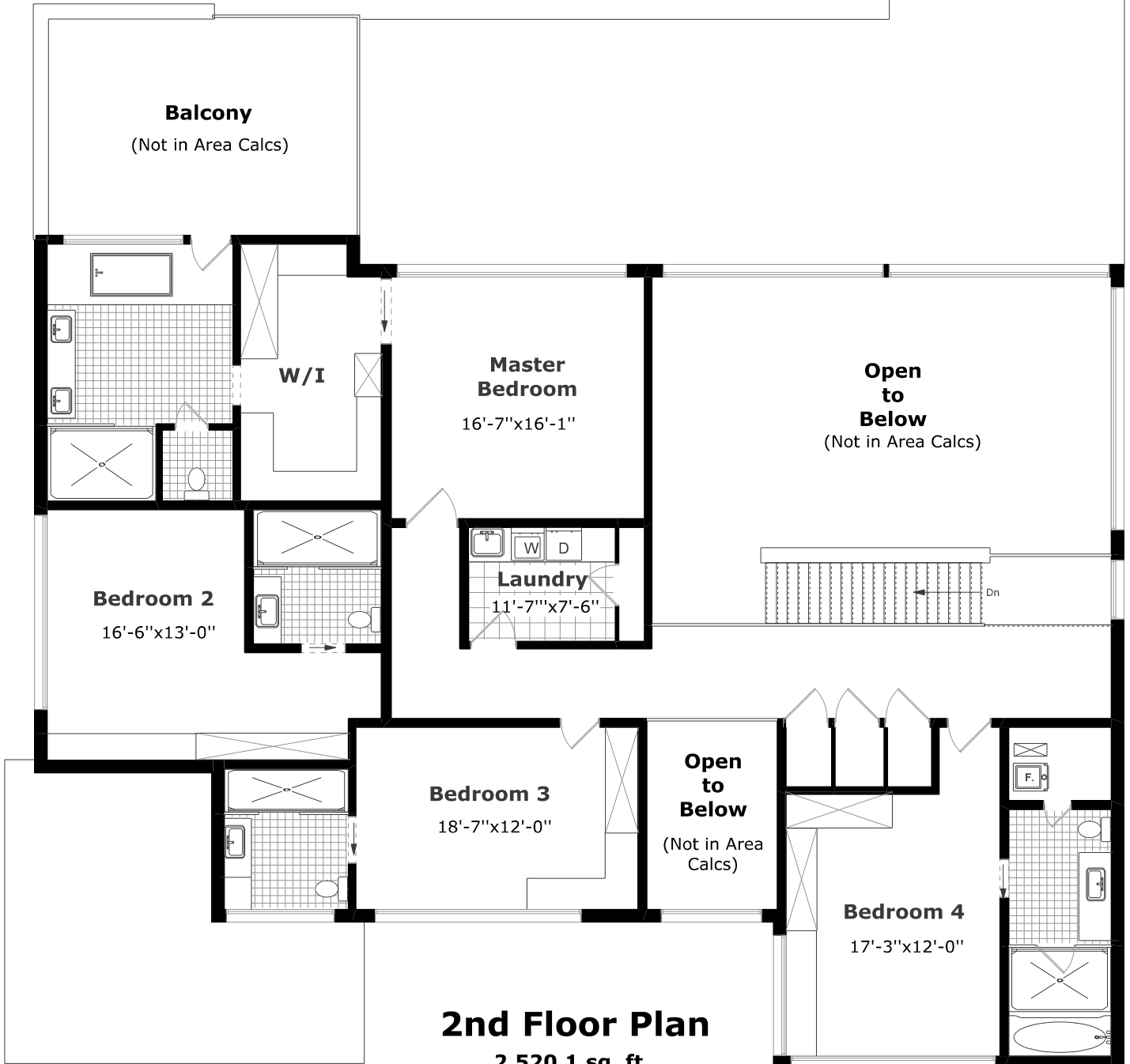
Measurements may not be 100% accurate. Floor Plans provided for illustrative purposes only. Room sizes not used to calculate area.

316 Morrison Road

Scale (ft) 0 5 10 15 20 25

Scale (M) 0 1 2 3 4 5 6 7

October 2016



2nd Floor Plan

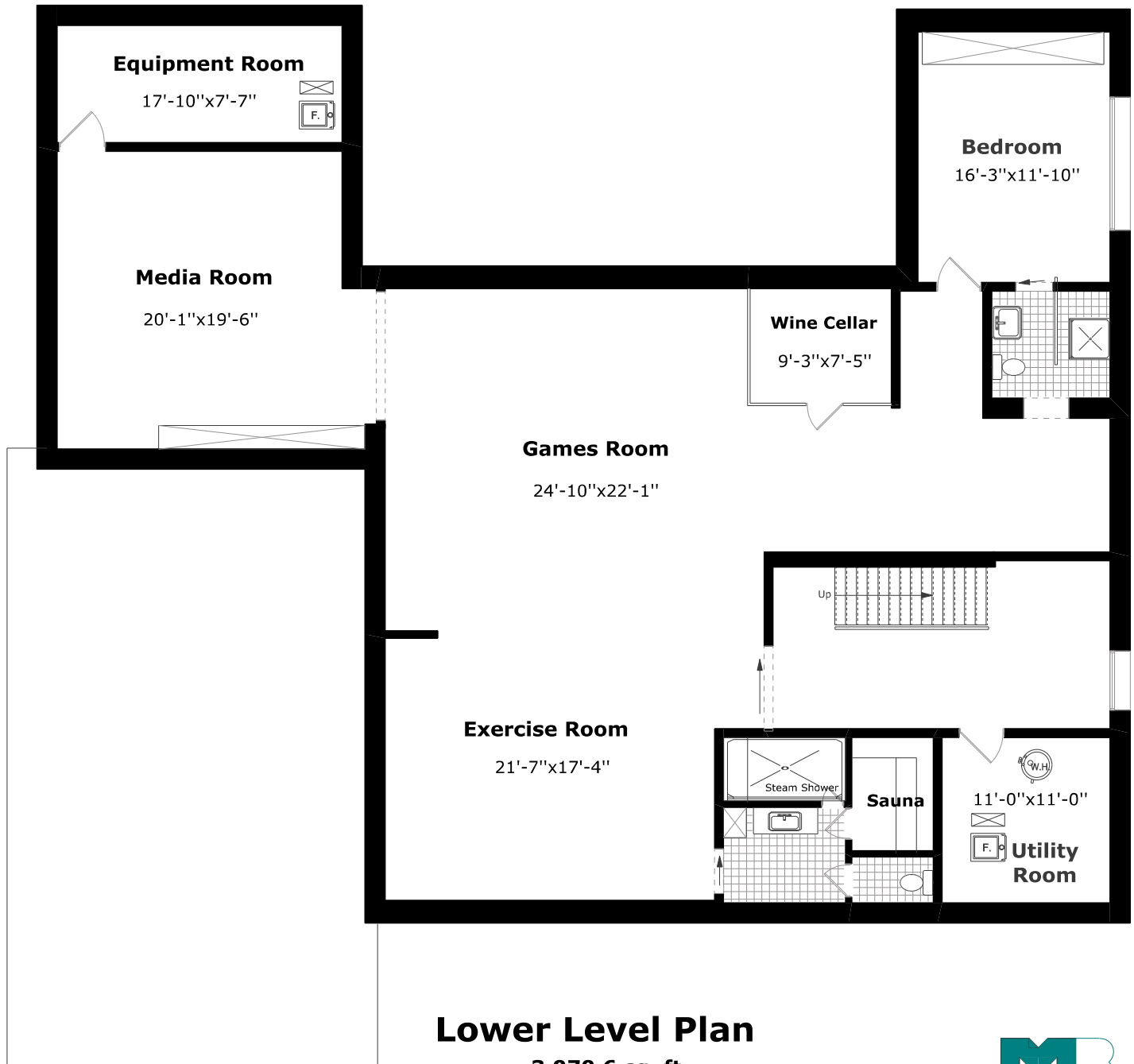
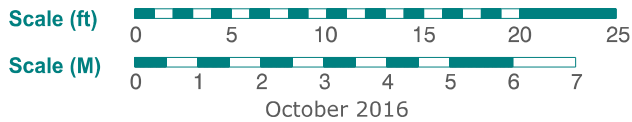
2,520.1 sq. ft.

9'-0" Ceiling



Measurements may not be 100% accurate. Floor Plans provided for illustrative purposes only. Room sizes not used to calculate area.

316 Morrison Road



Lower Level Plan

3,070.6 sq. ft.

8'-8" Ceiling



Measurements may not be 100% accurate. Floor Plans provided for illustrative purposes only. Room sizes not used to calculate area.